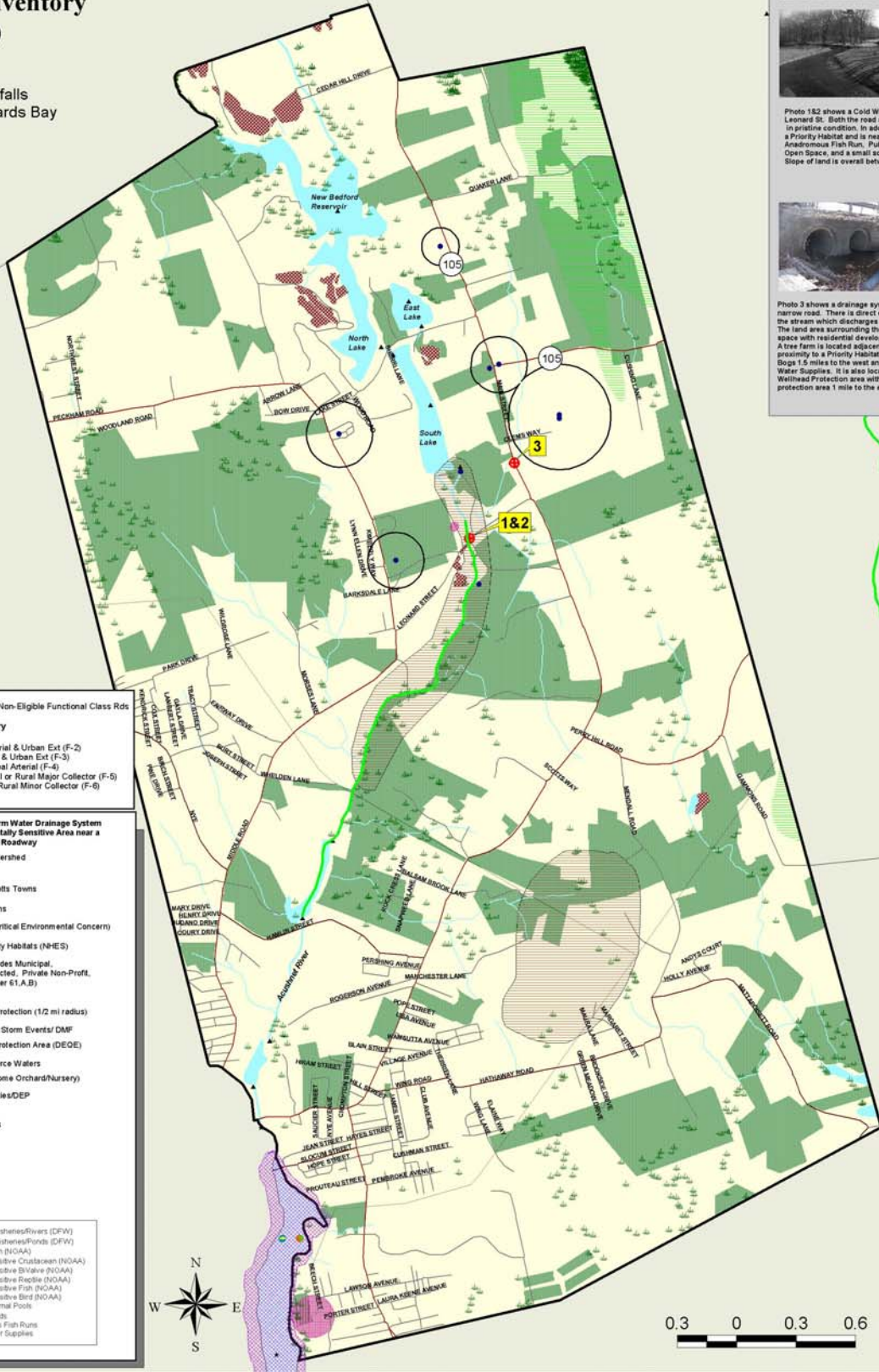


Town of Acushnet, MA

GRRIP (Geographic Roadway Runoff Inventory Program)

All of Acushnet falls
within the Buzzards Bay
Watershed



Local Rds & Other Non-Eligible Functional Class Rds

Federal Road Inventory

- Interstate (F-1)
- Rural Principal Arterial & Urban Ext (F-2)
- Rural Minor Arterial & Urban Ext (F-3)
- Other Urban Principal Arterial (F-4)
- Urban Minor Arterial or Rural Major Collector (F-5)
- Urban Collector or Rural Minor Collector (F-6)

Location of a Storm Water Drainage System in an Environmentally Sensitive Area near a Federally Eligible Roadway

- Buzzards Bay Watershed
- Town Boundary
- Other Massachusetts Towns
- Rhode Island Towns
- ACEC (Areas of Critical Environmental Concern)
- Estimated & Priority Habitats (NHES)
- Open Space (includes Municipal, Permanently Protected, Private Non-Profit, Agricultural, Chapter 61A.B)
- Wetlands
- Interim Wellhead Protection (1/2 mi radius)
- Critical Areas after Storm Events/DMF
- Approved Zoned Protection Area (DEOE)
- Outstanding Resource Waters
- Cranberry Bogs (some Orchard/Nursery)
- Solid Waste Facilities/DEP
- Barrier Beaches
- Transmission Lines
- Railroads
- Lakes & Ponds
- Rivers & Streams
- Ocean

Environmental Features Legend:

- Coldwater Fishes/Rivers (DFW)
- Coldwater Fishes/Ponds (DFW)
- Public Beach (NOAA)
- Rare or Sensitive Crustacean (NOAA)
- Rare or Sensitive Bivalve (NOAA)
- Rare or Sensitive Reptile (NOAA)
- Rare or Sensitive Fish (NOAA)
- Rare or Sensitive Bird (NOAA)
- Certified Vernal Pools
- Shellfish Beds
- Anadromous Fish Runs
- Public Water Supplies

1
Located on Leonard St and the Acushnet River. This section is a Cold Water Fishery.

2
Photo showing downstream from the Cold Water Fishery on Leonard Street.

Photo 1&2 shows a Cold Water Fishery located on Leonard St. Both the road and the drainage facility were in pristine condition. In addition, the system is located in a Priority Habitat and is near Cranberry Bogs, an Anadromous Fish Run, Public Drinking Supply water, Open Space, and a small solid waste facility. Slope of land is overall between 3-15%.

3
Located on Main St between the intersection of Leonard and Cam's Way.

Photo 3 shows a drainage system on Main St, a well traveled narrow road. There is direct discharge from the road into the stream which discharges into the Acushnet River. The land area surrounding the culvert system is mostly open space with residential development on Main Street. A tree farm is located adjacent to the system. It is in proximity to a Priority Habitat, Cold Water Fishery, Cranberry Bogs 1.5 miles to the west and several Public Drinking Water Supplies. It is also located in an interim Wellhead Protection area with a large Zoned water supply protection area 1 mile to the east.



SRPEDD
Southeastern Regional Planning and Economic Development District

MASS GIS
Massachusetts Geographic Information System

Map Printed by SRPEDD
Southeastern Regional Planning & Economic Development
Taunton, MA
June 2008

The GRRIP (Geographic Roadway Runoff Inventory Program) is an analysis of roadway drainage facilities in relation to intersecting environmentally sensitive areas on defined Federal A/EI "functionally classed" roads. The GRRIP project analyzed 14 SRPEDD towns within the Buzzards Bay Watershed Region and mapped those storm water drainage systems considered to be located in critically sensitive environmental areas.

The Towns are Acushnet, Carver, Dartmouth, Fairhaven, Fall River, Freetown, Lakesville, Marion, Mattapoisett, Middleborough, New Bedford, Rochester, Wareham, Westport

This map was produced by SRPEDD (Southeastern Regional Planning and Economic Development District) Taunton, MA. Portions of the source digital data may have been supplied by the Massachusetts Executive Office of Environmental Affairs, Massachusetts College Corporation of Newton, MA, ES&I, the Bureau of Transportation Planning & Development, Division of Marine Fisheries, Division of Fisheries & Wildlife, Buzzards Bay Project, USGS, Soils Conservation Service, Coastal Zone Management, National Oceanic & Atmospheric Administration (NOAA).

The location of feature boundaries shown on this map are approximate and are intended for planning purposes only. This map is not intended for legal, engineering or survey purposes.

The funding for this project was provided by the Executive Office of Transportation (EOTC) and the Massachusetts Highway Department under the STP Transportation Enhancements Program.