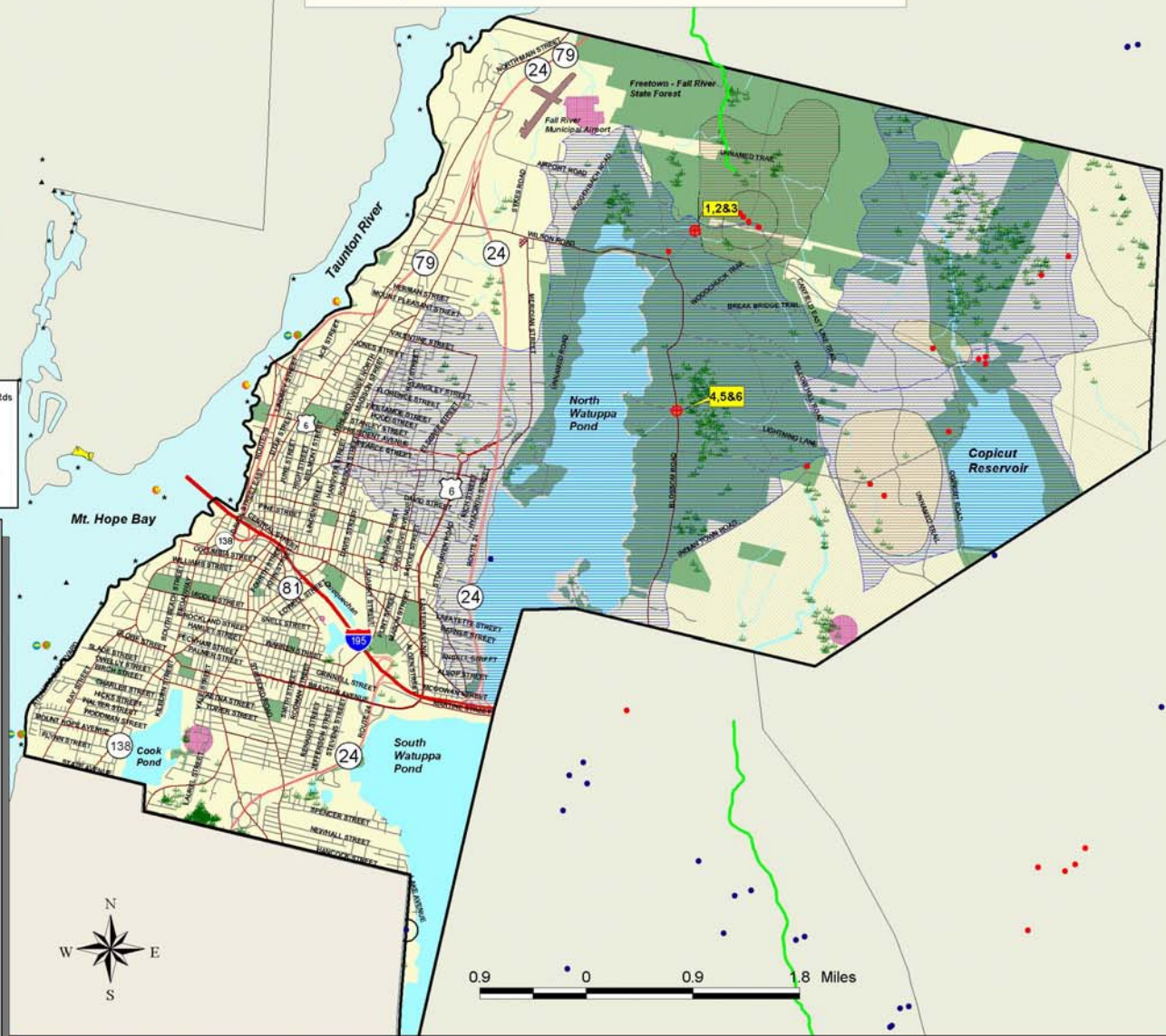


# City of Fall River, MA

## GRRIP (Geographic Roadway Runoff Inventory Program)

- Local Rds & Other Non-Eligible Functional Class Rds
- Federal Road Inventory**
- Interstate (F-1)
  - Rural Principal Arterial & Urban Ext (F-2)
  - Rural Minor Arterial & Urban Ext (F-3)
  - Other Urban Principal Arterial (F-4)
  - Urban Minor Arterial or Rural Major Collector (F-5)
  - Urban Collector or Rural Minor Collector (F-6)

- Location of a Storm Water Drainage System in an Environmentally Sensitive Area near a Federally Eligible Roadway**
- Buzzards Bay Watershed
  - Town Boundary
  - Other Massachusetts Towns
  - Rhode Island Towns
  - ACEC (Areas of Critical Environmental Concern)
  - Estimated & Priority Habitats (NHES)
  - Open Space (includes Municipal, Permanently Protected, Private Non-Profit, Agricultural, Chapter 61A,B)
  - Wetlands
  - Intern Wetland Protection (1/2 mi radius)
  - Critical Areas after Storm Event/ DMF
  - Approved Zone/ Protection Area (DEGE)
  - Outstanding Resource Waters
  - Cranberry Bogs (some Orchard/Nursery)
  - Solid Waste Facilities/DEP
  - Barrier Beaches
  - Transmission Lines
  - Railroads
  - Lakes & Ponds
  - Rivers & Streams
  - Ocean
- Wildlife**
- Coldwater Fisheries/Rivers (DFW)
  - Coldwater Fisheries/Ponds (DPW)
  - Public Beach (NOAA)
  - Rare or Sensitive Crustacean (NOAA)
  - Rare or Sensitive S/V/Inverte (NOAA)
  - Rare or Sensitive Reptile (NOAA)
  - Rare or Sensitive Fish (NOAA)
  - Rare or Sensitive Bird (NOAA)
  - Certified Vernal Pools
  - Shellfish Beds
  - Anadromous Fish Runs
  - Public Water Supplies



0.9 0 0.9 1.8 Miles



Bell Rock Rd crossing Queen Gutter Brook near Wilson Rd. Cement Pool. Public Drinking Water.

**1**



Bell Rock Rd crossing Queen Gutter Brook near Wilson Rd. Shows Public Supply Water.

**2**



Bell Rock Rd crossing Queen Gutter Brook near Wilson Rd. Unpassable Road Conditions.

**3**

Photos 1,2&3 show a drainage system at Queen Gutter Brook which flows into North Watuppa Pond, a public drinking water supply for the city of Fall River. Road conditions were unpassable and extremely poor characterized by frost heaves, fractured, crumbling pavement and large potholes. The area has dense vegetated, forested wetlands with a very dense understorey. Drainage system is a cement walled detention structure approx 12' X 20' X approx 10' deep with a 3' deep cement overflow release channel through which water is discharged directly into the brook. The detention basin was open, in close proximity to the road and with no safety fencing or protective structure around it. Water appeared clean. The system is located in a designated Outstanding Resource Water area, near Certified Vernal Pools, Wetlands, a Cold Water Fisheries, a Priority Habitat, and the Freetown State Forest. A Solid Waste Facility is located approx 1.5 miles to the North. Slope of the land is greater than 30% at the point of discharge. There is direct discharge into the water from the road.



Blossom Road at Run Brook. Outflow Pipe into Brook.

**4**



Blossom Rd at Run Brook. Sign shows Public Drinking Supply Water.

**5**



Blossom Rd at Run Brook. Photo shows deplorable road conditions.

**6**

Photos 4,5&6 show a drainage system located at Run Brook, which flows into North Watuppa Pond, a public drinking water supply for the city of Fall River. Road condition is very poor with frost heaves, deep potholes, pavement loss and exposed rock. There is a detention system similar to Photo 3 above. The area has dense vegetated, forested wetlands with a very dense understorey. Drainage system is a cement walled detention structure approx 12' X 20' X approx 10' deep with a release channel. Water enters a 3' culvert and channeled into the brook. Detention basin was uncovered. Water appeared clean. The system is located in a designated Outstanding Resource Water area, near Certified Vernal Pools, Wetlands, a Cold Water Fisheries, a Priority Habitat approx 1.5 miles to the North, and the Freetown State Forest. A Solid Waste Facility is located approx 3 miles to the North. Slope of land is between 3 - 30% at the point of direct discharge from road into water. Flow of the water was strong.



This inventory was conducted under the Massachusetts Geographic Information System (MASS GIS) project. The project was funded by the Massachusetts Department of Transportation (DOT) and the Massachusetts Department of Environmental Protection (DEP). The project was completed in 2008.

Map Produced by SRPEDO  
Sponsored by Regional Planning & Economic Development District  
Fall River, MA  
June 2008

The GRRIP (Geographic Roadway Runoff Inventory Program) is an analysis of roadway drainage facilities in relation to intersecting environmentally sensitive areas on defined Federal Aid "functionally classed" roads. The GRRIP project analyzed 14 SRPEDO towns within the Buzzards Bay Watershed Region and mapped those storm water drainage systems considered to be located in critically sensitive environmental areas.

The Towns analyzed for this project: Acushnet, Carver, Dartmouth, Fairhaven, Fall River, Freetown, Lakeville, Marion, Mattapoisett, Middleborough, New Bedford, Rochester, Wareham, Westport.

This map was produced by SRPEDO (Southeastern Regional Planning and Economic Development District) Taunton, MA. Portions of the source digital data may have been supplied by the Massachusetts Executive Office of Environmental Affairs, MassGIS, Caliper Corporation of Newton, MA, ESRI, the Bureau of Transportation Planning & Development, Division of Marine Fisheries, Division of Fisheries & Wildlife, Buzzards Bay Project, USDA, Soils Conservation Service, Coastal Zone Management, National Oceanic & Atmospheric Administration (NOAA).

The location of feature boundaries shown on this map are approximate and are intended for planning purposes only. This map is not intended for legal, engineering or survey purposes.

The funding for this project was provided by the Executive Office of Transportation (EOTC) and the Massachusetts Highway Department under the STP Transportation Enhancements Program.