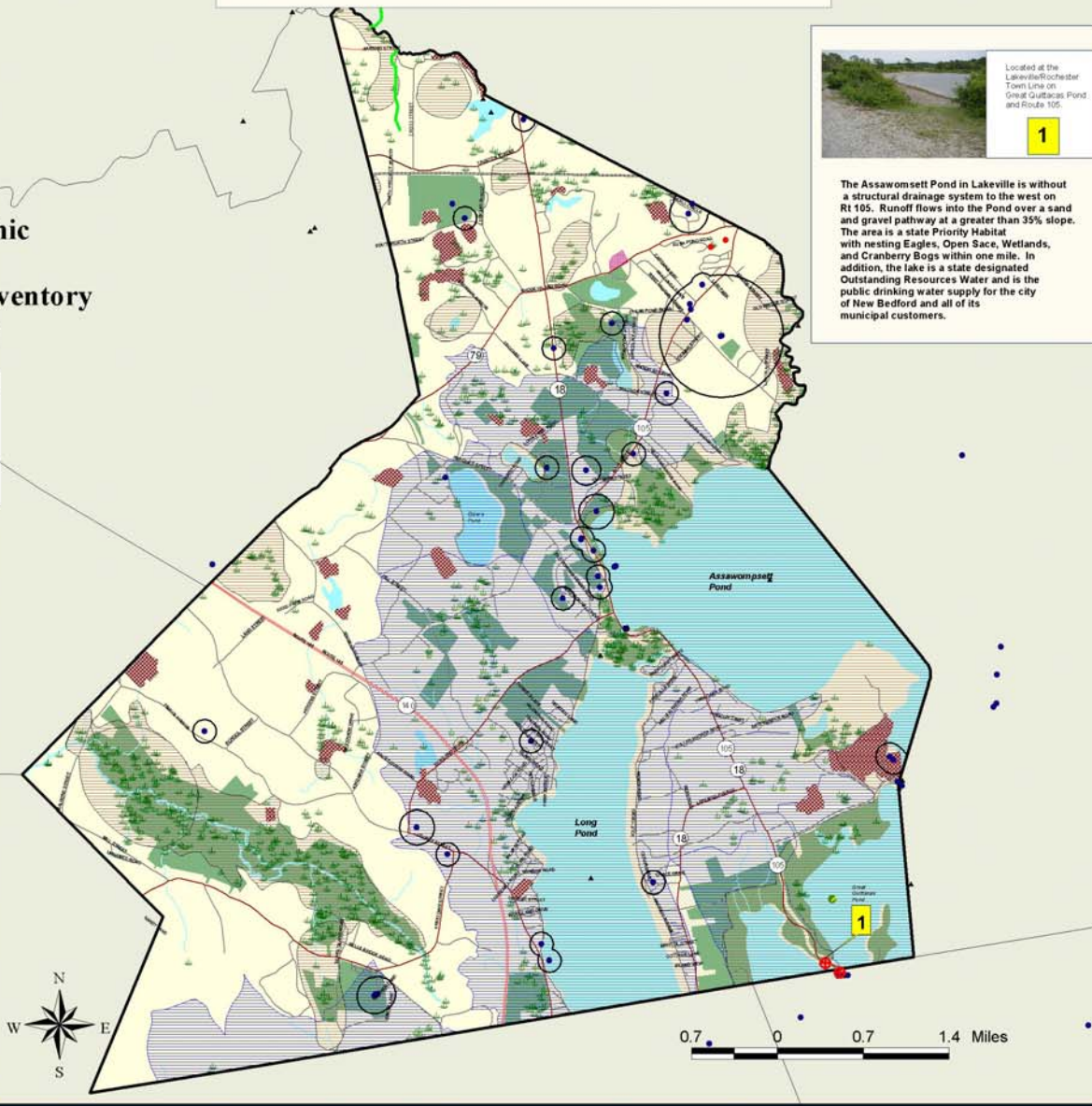


Town of Lakeville, MA

GRRIP (Geographic Roadway Runoff Inventory Program)

- Local Rds & Other Non-Eligible Functional Class Rds
- Federal Road Inventory**
- Interstate (F-1)
 - Rural Principal Arterial & Urban Ext (F-2)
 - Rural Minor Arterial & Urban Ext (F-3)
 - Other Urban Principal Arterial (F-4)
 - Urban Minor Arterial or Rural Major Collector (F-5)
 - Urban Collector or Rural Minor Collector (F-6)

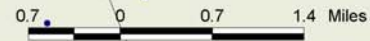
- Location of a Storm Water Drainage System in an Environmentally Sensitive Area near a Federally Eligible Roadway**
- Buzzards Bay Watershed
 - Town Boundary
 - Other Massachusetts Towns
 - Rhode Island Towns
 - ACEC (Areas of Critical Environmental Concern)
 - Estimated & Priority Habitats (IHES)
 - Open Space (includes Municipal, Permanently Protected, Private Non-Profit, Agricultural, Chapter 61A/B)
 - Wetlands
 - Interim Wetland Protection (1/2 mi radius)
 - Critical Areas after Storm Event/ DMF
 - Approved Zoneti Protection Area (DEQE)
 - Outstanding Resource Waters
 - Cranberry Bogs (some Orchard/Nursery)
 - Solid Waste Facilities/DCP
 - Barrier Beaches
 - Transmission Lines
 - Railroads
 - Lakes & Ponds
 - Rivers & Streams
 - Ocean
- Environmental Sensitive Areas**
- Coldwater Fishes/Rivers (DFW)
 - Coldwater Fishes/Ponds (DFW)
 - Public Beach (NOAA)
 - Rare or Sensitive Crustacean (NOAA)
 - Rare or Sensitive Bivalve (NOAA)
 - Rare or Sensitive Reptile (NOAA)
 - Rare or Sensitive Fish (NOAA)
 - Rare or Sensitive Bird (NOAA)
 - Certified Vernal Pools
 - Sharptail Beds
 - Anadromous Fish Runs
 - Public Water Supplies



Located at the Lakeville/Rochester Town Line on Great Crabtree Pond and Route 105.

1

The Assawomsett Pond in Lakeville is without a structural drainage system to the west on Rt 105. Runoff flows into the Pond over a sand and gravel pathway at a greater than 35% slope. The area is a state Priority Habitat with nesting Eagles, Open Space, Wetlands, and Cranberry Bogs within one mile. In addition, the lake is a state designated Outstanding Resources Water and is the public drinking water supply for the city of New Bedford and all of its municipal customers.



This program was developed by the Massachusetts Department of Transportation (MassDOT) in cooperation with the Massachusetts Department of Environmental Protection (MassDEP) and the Massachusetts Department of Agriculture (MassAg) and the Massachusetts Department of Transportation (MassDOT).



Map Produced by SRPEDD
Southeastern Regional Planning & Economic Development
Tarrant, MA
June 2005

The GRRIP (Geographic Roadway Runoff Inventory Program) is an analysis of roadway drainage facilities in relation to intersecting environmentally sensitive areas on defined Federal Aid "functionally classed" roads. The GRRIP project analyzed 14 SRPEDD towns within the Buzzards Bay Watershed Region and mapped those storm water drainage systems considered to be located in critically sensitive environmental areas.

The Towns are Acushnet, Carver, Dartmouth, Fairhaven, Fall River, Freetown, Lakeville, Marion, Mattapoisett, Middleborough, New Bedford, Rochester, Warcham, Westport

This map was produced by SRPEDD (Southeastern Regional Planning and Economic Development District), Tarrant, MA. Portions of the source digital data map have been supplied by the Massachusetts Executive Office of Environmental Affairs, Massachusetts Caliper Corporation of Newton, MA, ESRI, the Bureau of Transportation Planning & Development, Division of Marine Fisheries, Division of Fisheries & Wildlife, Buzzards Bay Project, USFWS, State Conservation Service, Coastal Zone Management, National Oceanic & Atmospheric Administration (NOAA).

The location of feature boundaries shown on this map are approximate and are intended for planning purposes only. This map is not intended for legal, engineering or survey purposes.

The funding for this project was provided by the Executive Office of Transportation (EOCT) and the Massachusetts Highway Department under the STP Transportation Enhancements Program.