

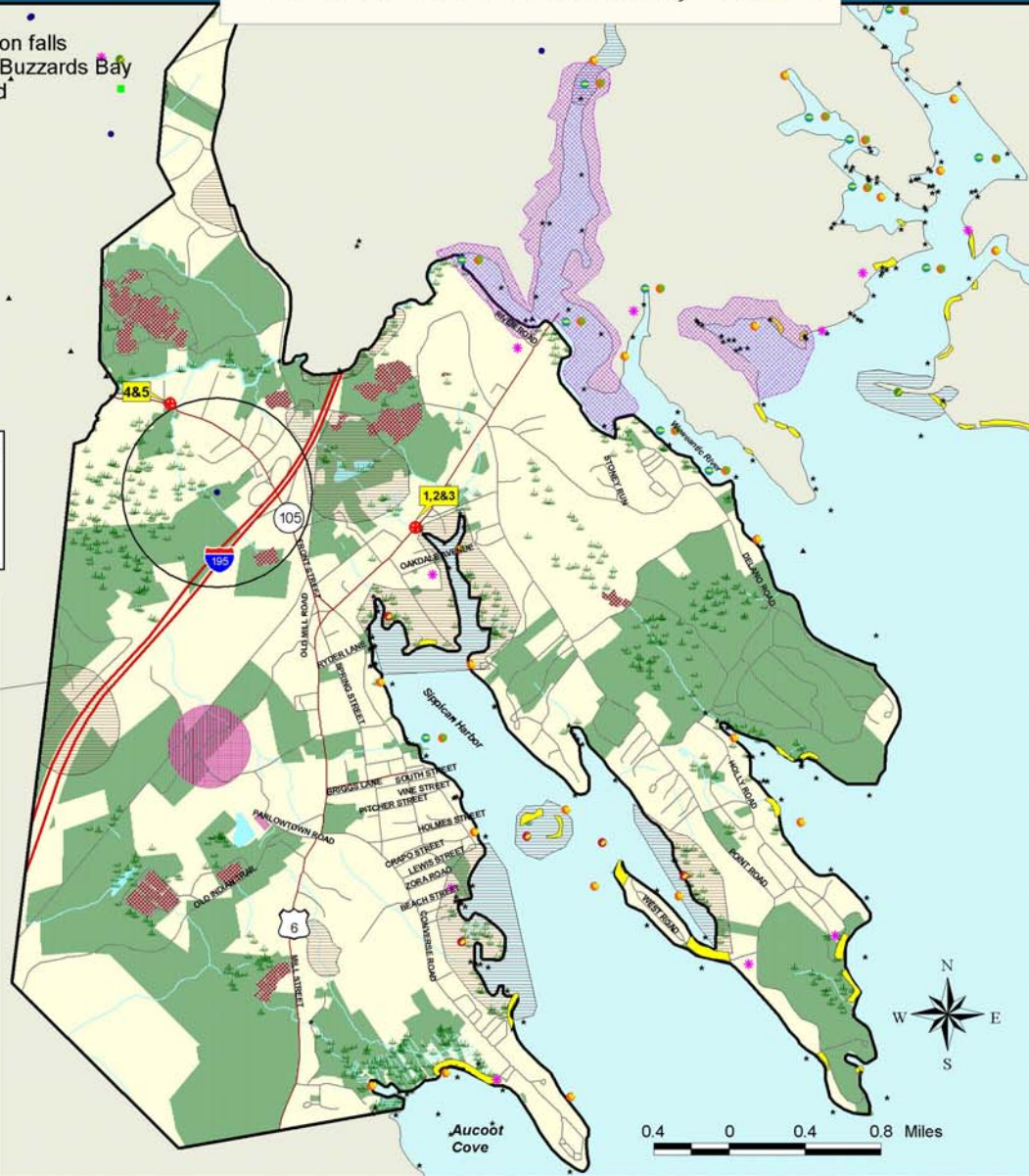
Town of Marion, MA

GRRIP (Geographic Roadway Runoff Inventory Program)

All of Marion falls
within the Buzzards Bay
Watershed

- Local Rds & Other Non-Eligible Functional Class Rds
- Federal Road Inventory**
- Interstate (F-1)
 - Rural Principal Arterial & Urban Ext (F-2)
 - Rural Minor Arterial & Urban Ext (F-3)
 - Other Urban Principal Arterial (F-4)
 - Urban Minor Arterial or Rural Major Collector (F-5)
 - Urban Collector or Rural Minor Collector (F-6)

- Location of a Storm Water Drainage System in an Environmentally Sensitive Area near a Federally Eligible Roadway
- Buzzards Bay Watershed
 - Town Boundary
 - Other Massachusetts Towns
 - Rhode Island Towns
 - ACEC (Areas of Critical Environmental Concern)
 - Estimated & Priority Habitats (NHES)
 - Open Space (includes Municipal, Permanently Protected, Private Non-Profit, Agricultural, Chapter 61A,B)
 - Wetlands
 - Interim Wetland Protection (1/2 mi radius)
 - Critical Areas after Storm Events/ DMF
 - Approved Zonal Protection Area (DEGE)
 - Outstanding Resource Waters
 - Cranberry Bogs (some Orchard/Nursery)
 - Solid Waste Facilities/DEP
 - Barren Beaches
 - Transmission Lines
 - Railroads
 - Lakes & Ponds
 - Rivers & Streams
 - Ocean
 - Coldwater Fishes/Rivers (DFW)
 - Coldwater Fishes/Ponds (DFW)
 - Public Beach (NOAA)
 - Rare or Sensitive Ostracodean (NOAA)
 - Rare or Sensitive Bi-Valves (NOAA)
 - Rare or Sensitive Peptide (NOAA)
 - Rare or Sensitive Fish (NOAA)
 - Rare or Sensitive Bird (NOAA)
 - Certified Vernal Pools
 - Shellfish Beds
 - Anadromous Fish Runs
 - Public Water Supplies



1



2



3

Photos 1,2&3 show a drainage system on Route 6 that has a catch basin with no direct discharge into the River unless overflow from pipe. The area is a marsh/wetland; a riverbank resource; and is a state designated Priority Habitat. In addition, the area is in proximity to Open Space; a Barrier Beach; a Public Beach; Rare or Sensitive Bi-Valves; and Shellfish Beds. The general roadway condition is good with debris and sediment evident in the culvert. Slope of the land is greater than 30% which increases potential for overflow from catch basin during storms.



4



5

Photos 4&5 shows rip-rapped swale drainage with direct discharge into the Sippican River. The condition of the roadway is fair to good with evidence of some crumbling on the pavement edge. The land area surrounding this section of roadway is a forested riverbank resource with a dense understory in a large area of Open Space that has minimal residential development. The system is at the boundary of a Zone II surface water protection area with Cranberry Bogs; a Priority Habitat and a Public Drinking Water Supply nearby.



0.4 0 0.4 0.8 Miles



The location of the town of Marion, Massachusetts, is shown on the map. The map is intended for planning purposes only. This map is not intended for legal, engineering or survey purposes.



Map Produced by SRPEDD
Regional Planning & Economic Development
June 2010

The GRRIP (Geographic Roadway Runoff Inventory Program) is an analysis of roadway drainage facilities in relation to intersecting environmentally sensitive areas on defined Federal Aid "functionally classed" roads. The GRRIP project analyzed 14 SRPEDD towns within the Buzzards Bay Watershed Region and mapped those storm water drainage systems considered to be located in critically sensitive environmental areas.

The Towns are Acushnet, Carver, Dartmouth, Fairhaven, Fall River, Freetown, Lakeville, Marion, Mattapoisett, Middleborough, New Bedford, Rochester, Wareham, Westport

This map was produced by SRPEDD (Southeastern Regional Planning and Economic Development District) Taunton, MA. Portions of the source digital data may have been supplied by the Massachusetts Executive Office of Environmental Affairs, MassGIS; Caliper Corporation of Newton, MA; ESRI; the Bureau of Transportation Planning & Development, Division of Marine Fisheries, Division of Fisheries & Wildlife, Buzzards Bay Project, USDA Soils Conservation Service, Coastal Zone Management, National Oceanic & Atmospheric Administration (NOAA)

The location of feature boundaries shown on this map are approximate and are intended for planning purposes only. This map is not intended for legal, engineering or survey purposes.

The funding for this project was provided by the Executive Office of Transportation (EOTC) and the Massachusetts Highway Department under the STP Transportation Enhancements Program.