

Town of Rochester, MA

GRRIP (Geographic Roadway Runoff Inventory Program)

All of Rochester falls
within the Buzzards Bay
Watershed

- Local Rds & Other Non-Eligible Functional Class Rds
- Federal Road Inventory**
- Interstate (F-1)
 - Rural Principal Arterial & Urban Ext (F-2)
 - Rural Minor Arterial & Urban Ext (F-3)
 - Other Urban Principal Arterial (F-4)
 - Urban Minor Arterial or Rural Major Collector (F-5)
 - Urban Collector or Rural Minor Collector (F-6)

- Location of a Storm Water Drainage System in an Environmentally Sensitive Area near a Federally Eligible Roadway
- Buzzards Bay Watershed
 - Town Boundary
 - Other Massachusetts Towns
 - Rhode Island Towns
 - ACEC (Areas of Critical Environmental Concern)
 - Estimated & Priority Habitats (NHES)
 - Open Space (includes Municipal, Permanently Protected, Private Non-Profit, Agricultural, Chapter 61A,B)
 - Wetlands
 - Interim Wetland Protection (1/2 mi radius)
 - Critical Areas after Storm Events/DMF
 - Approved Zonal Protection Area (DEQE)
 - Outstanding Resource Waters
 - Cranberry Bogs (some Orchard/Nursery)
 - Solid Waste Facilities/DEP
 - Barren Beaches
 - Transmission Lines
 - Railroads
 - Lakes & Ponds
 - Rivers & Streams
 - Ocean
 - Coldwater Fisheries/Rivers (DFW)
 - Coldwater Fisheries/Ponds (DFW)
 - Public Beach (NOAA)
 - Range of Sensitive Crustacean (NOAA)
 - Range of Sensitive Oligochaete (NOAA)
 - Range of Sensitive Reptile (NOAA)
 - Range of Sensitive Fish (NOAA)
 - Range of Sensitive Bird (NOAA)
 - Certified Vernal Pools
 - Sharkfin Beds
 - Anadromous Fish Runs
 - Public Water Supplies

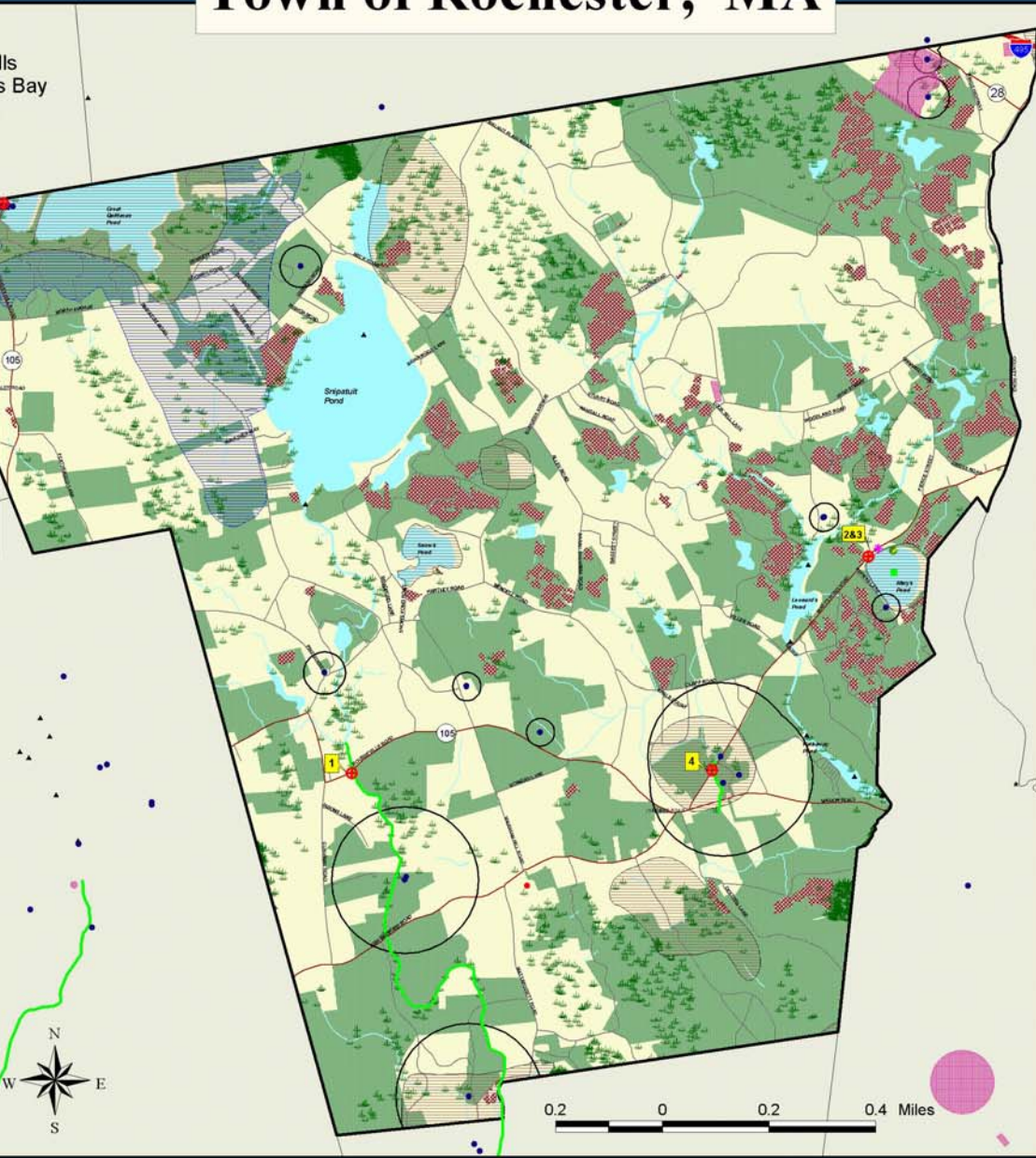
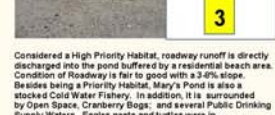


Photo 1 shows the Mappoissett River below the drainage system. Roadway condition is fair to good with no direct discharge from the roads into the river. In proximity to Open Space; Wetlands; an Interim Wetland Protection area; Coldwater Fisheries; and a Public Water Supply upstream.



Mary's Pond at Mary's Pond Rd. Photo shows a large snapping turtle. Pond has numerous wildlife species including eagles.



Considered a High Priority Habitat, roadway runoff is directly discharged into the pond buffered by a residential beach area. Condition of Roadway is fair to good with a 2-4% slope. Besides being a Priority Habitat, Mary's Pond is also a stocked Cold Water Fishery. In addition, it is surrounded by Open Space, Cranberry Bogs, and several Public Drinking Supply Waters. Eagle nests and turtles were in plain view at the Pond.



Photo 4 shows a drainage system with direct runoff into Doggett Brook. This area is part of the public drinking supply waters for the town of Marion. Roadway condition is good with a slope of land leading into the brook of 15-30%. The area is a Priority Habitat with Open Space and a Cold Water Fishery.



Photo 5 was taken at the Lowell/Rochester line in Lakesville on RT105 looking south toward Rochester at Quilicas Pond. This drinking reservoir is considered an Outstanding Resource Water. There are areas of direct runoff into the pond. The area is also considered a Priority Habitat with Eagles evident in addition to Wetlands; Open Space; Anadromous Fish Runs and Public Drinking Supply waters. Slope of the land is 8-15%.



The funding for this project was provided by the Executive Office of Transportation Planning & Development, Department under the STP Transportation Enhancements Program.

The GRRIP (Geographic Roadway Runoff Inventory Program) is an analysis of roadway drainage facilities in relation to intersecting environmentally sensitive areas on defined Federal Aid "functionally classed" roads. The GRRIP project analyzed 14 SRPEDD towns within the Buzzards Bay Watershed Region and mapped those storm water drainage systems considered to be located in critically sensitive environmental areas.

This map was produced by SRPEDD (Southwestern Regional Planning and Economic Development District) Taunton, MA. Portions of the source digital data may have been supplied by the Massachusetts Executive Office of Environmental Affairs, MassGIS, Colson Corporation of Newton, MA; ESRI, the Bureau of Transportation Planning & Development, Division of Marine Fisheries, Division of Fisheries & Wildlife, Buzzards Bay Project, USDA, Soils Conservation Service, Coastal Zone Management, National Oceanic & Atmospheric Administration (NOAA).

The Towns are Acushnet, Carver, Dartmouth, Fairhaven, Fall River, Freetown, Lakesville, Marion, Mattapoisett, Middleborough, New Bedford, Rochester, Wareham, Westport

The location of feature boundaries shown on this map are approximate and are intended for planning purposes only. This map is not intended for legal, engineering or survey purposes.