

Town of N. Attleborough, MA

N. Attleboro falls within
the Ten Mile Watershed, the
Blackstone Watershed and
the Taunton River Watershed.



Route 1A over the
Ten Mile River

1



Route 1A over the
Ten Mile River

2

Woodcock Garrison and the liquor store at Route 1A over the Ten Mile River. Very low flow, muddy, with petroleum slick (slight). Bridge is in need of repair with exposed rebar and cracking concrete. There is debris in the river. Parts of channel wall on both sides of the street are collapsing.



Route 1
below Chestnut

3



Route 1
below Chestnut

4



Route 1
below Chestnut

5

Route 1 wetland, north, below Chestnut. Asphalt swale to 1" corrugated pipe emptying directly in the wetland. This is an example of a silted wetland overrun by vegetation (phragmites). Runoff from the road and adjacent parking lots have literally filled what was once an open waterbody. Pipe is damaged and filled with 4" of silt. Plans to restore this area have been developed by the Con Comm.

Route 1 wetland, south, near Remax Plaza. Same condition as wetland on the north side. Contributions from ReMax lot should be mitigated with parking lot and adjacent channel reconstruction. Headwall of the bridge and culvert has a crack from top to base and is gaping in spots.



Route 1 and
Jefferson

6



Route 1 and
Jefferson

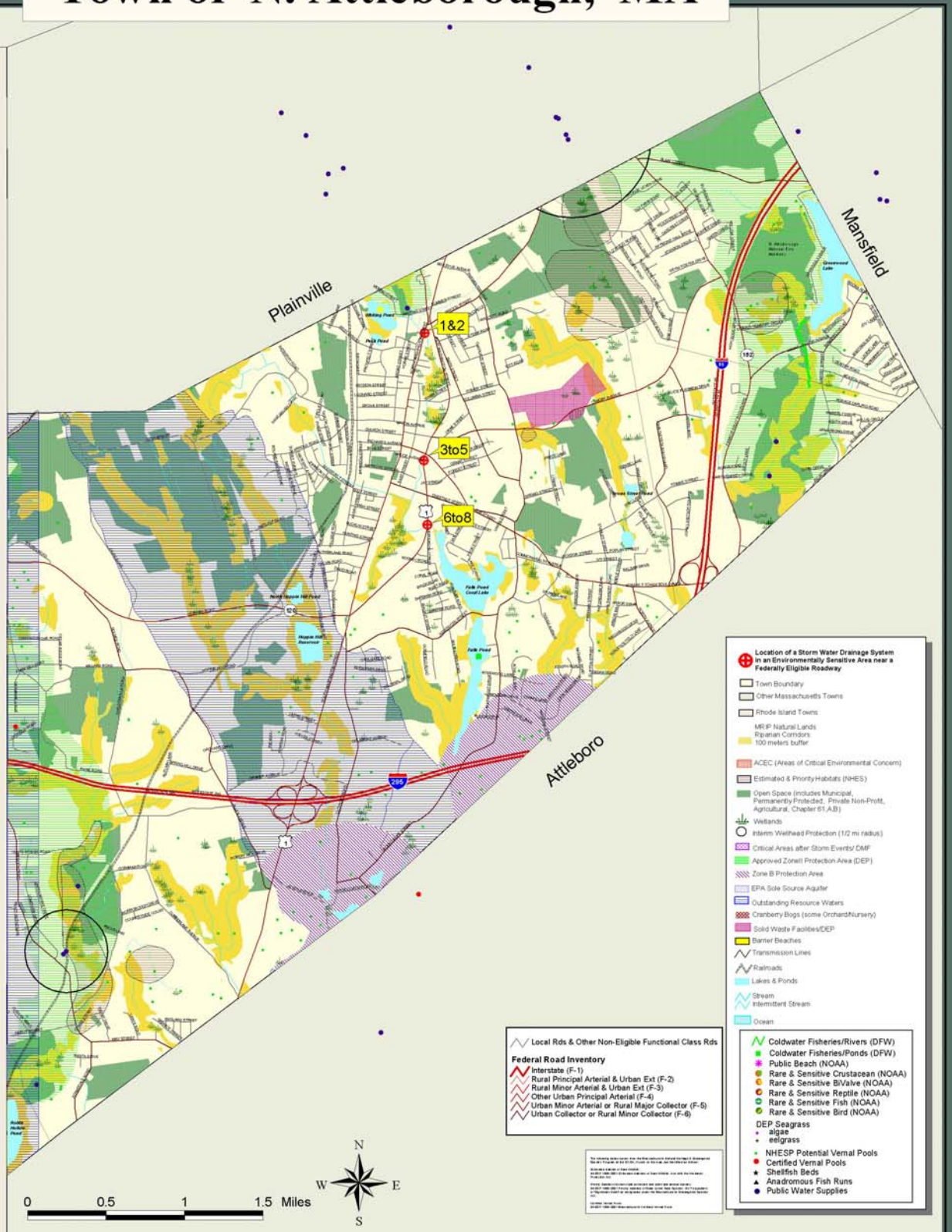
7



Route 1 and
Jefferson

8

Route 1 and Jefferson at the Continental House Apts. Bridge over the Ten Mile going into Falls Pond/Coral Lake needs repair. Rail has exposed rebar and crumbling cement. River bank of the Continental parking lot is rip-rapped but not near the entrance where the bank is exposed. There is evidence of erosion, siltation and some debris.



Location of a Storm Water Drainage System in an Environmentally Sensitive Area near a Federally Eligible Roadway

- Town Boundary
- Other Massachusetts Towns
- Rhode Island Towns
- MRF Natural Lands
- Riparian Corridor
- 100 meters buffer
- ACEC (Areas of Critical Environmental Concern)
- Estimated & Priority Habitats (NHES)
- Open Space (includes Municipal, Permanently Protected, Private Non-Profit, Agricultural, Chapter 61A,B)
- Wetlands
- Interim Wetland Protection (1/2 mi radius)
- Critical Areas after Storm Events/ DMP
- Approved Zonell Protection Area (DEP)
- Zone B Protection Area
- EPA Sole Source Aquifer
- Outstanding Resource Waters
- Cranberry Bogs (some Orchard/Nursery)
- Solid Waste Facilities/DEP
- Barrier Beaches
- Transmission Lines
- Railroads
- Lakes & Ponds
- Stream
- Intermittent Stream
- Ocean

Federal Road Inventory

- Interstate (F-1)
- Rural Principal Arterial & Urban Ext (F-2)
- Rural Minor Arterial & Urban Ext (F-3)
- Other Urban Principal Arterial (F-4)
- Urban Minor Arterial or Rural Major Collector (F-5)
- Urban Collector or Rural Minor Collector (F-6)

Local Rds & Other Non-Eligible Functional Class Rds

- Coldwater Fisheries/Rivers (DFW)
- Coldwater Fisheries/Ponds (DFW)
- Public Beach (NOAA)
- Rare & Sensitive Crustacean (NOAA)
- Rare & Sensitive Bivalve (NOAA)
- Rare & Sensitive Reptile (NOAA)
- Rare & Sensitive Fish (NOAA)
- Rare & Sensitive Bird (NOAA)
- DEP Seagrass
 - algae
 - eelgrass
- NHESP Potential Vernal Pools
- Certified Vernal Pools
- Shellfish Beds
- Anadromous Fish Runs
- Public Water Supplies



GRRIP II (Geographic Roadway Runoff Inventory Program) is an analysis of roadway drainage facilities in relation to intersecting environmentally sensitive areas on defined Federal Aid "functionally classed" roads. The GRRIP II project analyzed 18 SRPEDD towns within the Narragansett Bay Watershed Region and mapped those storm water drainage systems considered to be located in critically sensitive environmental areas.

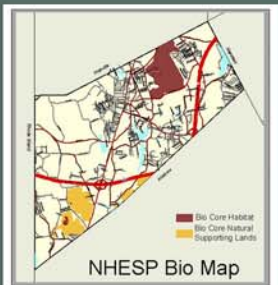
The Towns are Fall River, Freetown, Lakeville, Middleborough, Carver, Somerset, Swansea, Berkley, Taunton, Roylman, Seekonk, Rehoboth, Dighton, Attleboro, N. Attleborough, Norton, Mansfield, Plainville.

Map Produced by SRPEDD
Southern Regional Planning and Economic Development District
Taunton, MA
June 2002

This map was produced by SRPEDD (Southern Regional Planning and Economic Development District), Taunton, MA. Portions of the source digital data may have been supplied by the Massachusetts Executive Office of Environmental Affairs, Massachusetts Coastal Cooperation of Boston, MA; USFWS, the Bureau of Transportation Planning & Development, Division of Marine Fisheries, Division of Fisheries & Wildlife; NOAA, USGS, USDA, Natural Conservation Service, Coastal Zone Management, National Oceanic & Atmospheric Administration (NOAA).

The location of feature boundaries shown on this map are approximate and are intended for planning purposes only. This map is not intended for legal, engineering or survey purposes.

The funding for this project was provided by the Executive Office of Transportation (DOT) and the Massachusetts Highway Department under the National Map Program.



NHESP Bio Map