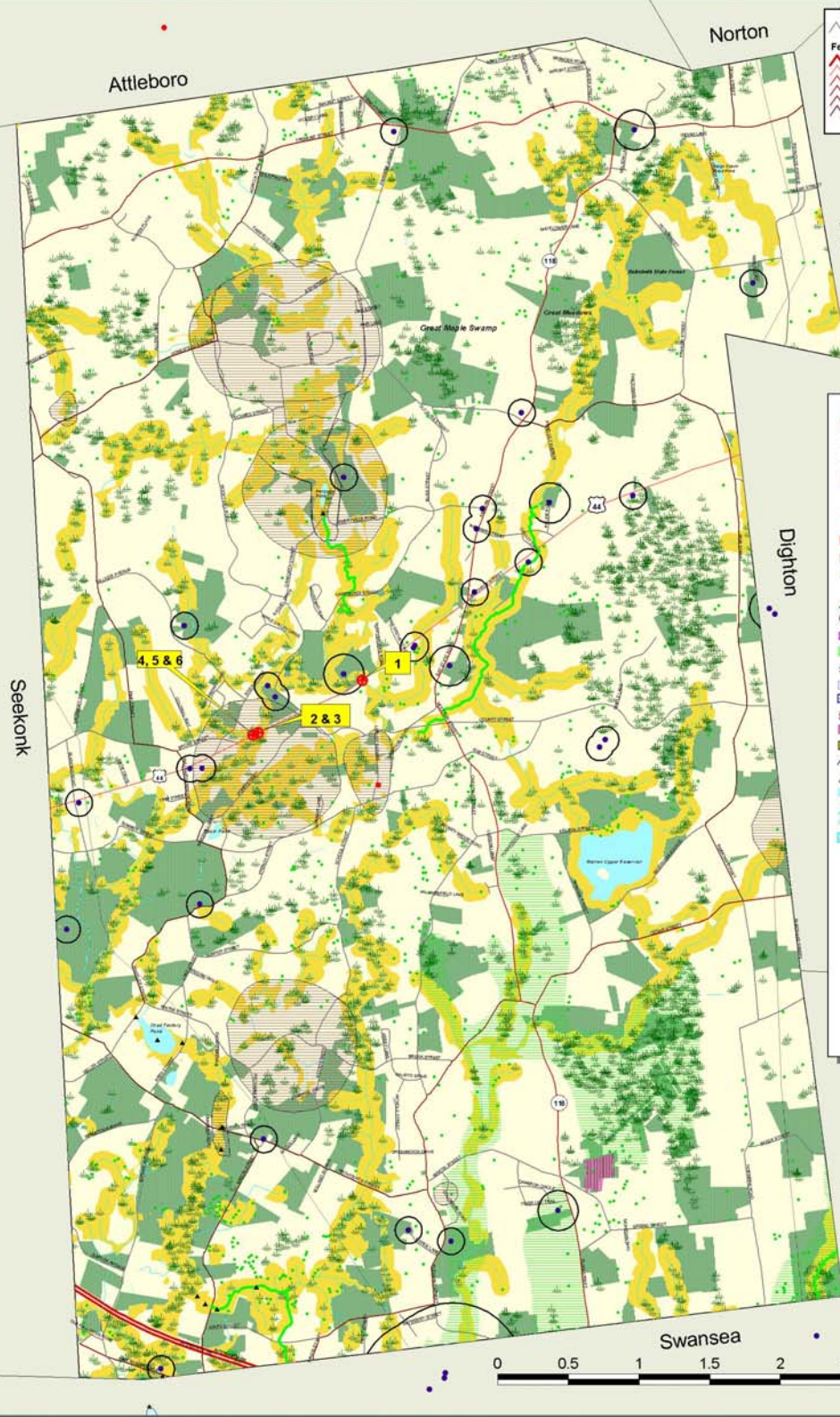


# Town of Rehoboth, MA

Rehoboth falls within  
the Narragansett Bay Watershed,  
the Ten Mile Watershed, the  
and the Taunton River Watershed.



**Local Rds & Other Non-Eligible Functional Class Rds**

**Federal Road Inventory**

- Interstate (F-1)
- Rural Principal Arterial & Urban Ext (F-2)
- Rural Minor Arterial & Urban Ext (F-3)
- Other Urban Principal Arterial (F-4)
- Urban Minor Arterial or Rural Major Collector (F-5)
- Urban Collector or Rural Minor Collector (F-6)

Map showing the location of the stormwater drainage system in an environmentally sensitive area near a Federally Eligible Roadway. The map is a composite of several maps. The base map is a 1:25,000 scale map of the Town of Rehoboth, MA. The map shows the location of the stormwater drainage system in an environmentally sensitive area near a Federally Eligible Roadway. The map is a composite of several maps. The base map is a 1:25,000 scale map of the Town of Rehoboth, MA. The map shows the location of the stormwater drainage system in an environmentally sensitive area near a Federally Eligible Roadway.

**Location of a Storm Water Drainage System in an Environmentally Sensitive Area near a Federally Eligible Roadway**

- Town Boundary
- Other Massachusetts Towns
- Rhode Island Towns
- MRP Natural Lands
- Riparian Corridor
- 100 meters buffer
- ACEC (Areas of Critical Environmental Concern)
- Estimated & Priority Habitats (NHES)
- Open Space (includes Municipal, Permanently Protected, Private Non-Profit, Agricultural, Chapter 61A,B)
- Wetlands
- Interim Wetland Protection (1/2 mi radius)
- Critical Areas after Storm Event/DMF
- Approved Zoning Protection Area (DEP)
- Zone B Protection Area
- EPA Site Source Aquifer
- Outstanding Resource Waters
- Cranberry Bogs (some Orchard/Nursery)
- Solid Waste Facilities/DEP
- Barrier Beaches
- Transmission Lines
- Railroads
- Lakes & Ponds
- Stream
- Intermittent Stream
- Ocean

**Legend for Environmental Features:**

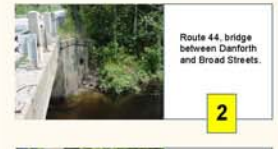
- Coldwater Fisheries/Rivers (DFW)
- Coldwater Fisheries/Ponds (DFW)
- Public Beach (NOAA)
- Rare & Sensitive Crustacean (NOAA)
- Rare & Sensitive Bivalve (NOAA)
- Rare & Sensitive Reptile (NOAA)
- Rare & Sensitive Fish (NOAA)
- Rare & Sensitive Bird (NOAA)
- DEP Seagrass
  - algae
- NHESP Potential Vernal Pools
- Certified Vernal Pools
- Shellfish Beds
- Anadromous Fish Runs
- Public Water Supplies



Route 44, southwest of the Palmer School.

**1**

Route 44, southwest of the Palmer River School: adjacent to the breakdown lane, there is a paved swale into an earthen ditch. Deep rilling is found off of the ditch. 6" X 9" channel is cut by stormwater flows. Flows through wooded wetland bordering the Palmer River. The site is located in a wetland protection area for the school (small community supply).



Route 44, bridge between Danforth and Broad Streets.

**2**



Route 44, bridge between Danforth and Broad Streets.

**3**

Route 44, bridge between Danforth and Broad Streets: to the east, a ditch has been cut by stormwater flows around the headwall with erosion and rilling evident. To the west, there is deteriorated concrete flow attenuators at the terminus of the headwall with evidence of erosion and rilling. The site is located over the Palmer River in a priority habitat area near a small community water supply/wethead.



Route 44, bridge between Danforth and Broad Streets. East side of Rt. 44.

**4**



Route 44, bridge between Danforth and Broad Streets. East side of Rt. 44.

**5**



Route 44, bridge between Danforth and Broad Streets. East side of Rt. 44.

**6**

Route 44, bridge between Danforth and Broad Streets: east side of Route 44, there is a paved swale near the bridge, approx. 50' from the Palmer River. It drains through vegetated understorey. The swale is in good condition. The headwall on the bridge has flaking and crumbling concrete. These structures are located adjacent to and over the Palmer River in a priority habitat and near a small community water supply/wethead.



GRRIP II (Geographic Roadway Runoff Inventory Program) is an analysis of roadway drainage facilities to determine existing environmental resource areas or defined potential environmental resource areas. The GRRIP II project involves 18 GRRIP II sites within the Narragansett Bay Watershed Region and 18 project sites within the Taunton River Watershed. The GRRIP II project is a joint effort of SRPEDD, the Towns of Fall River, Rehoboth, Middleborough, Carver, Duxbury, Bourne, Sandwich, Taunton, Seekonk, Dighton, Attleboro, St.oughton, Mattapa, and Wareham.

This map was produced by SRPEDD (Southwest Regional Planning and Economic Development District) Taunton, MA. Portions of the source digital data have been supplied by the Massachusetts Executive Office of Environmental Affairs, MA 02502; Capital Corporation of Rehoboth, MA, 01949; the Bureau of Transportation Planning & Development, Division of Marine Fisheries, Division of Fisheries & Wildlife, Bristol, MA; USGS, USGS National Conservation Service, Coastal Line Management, National Wetlands & Wetlands Administration (NOAA).

The location of feature boundaries shown on this map are approximate and are intended for planning purposes only. This map is not intended for legal, engineering or survey purposes.

The funding for this project was provided by the Executive Office of Transportation (DOT) and the Massachusetts Highway Department under the United Way Program.

Map Produced by SRPEDD  
Southwest Regional Planning & Economic Development District  
Taunton, MA  
June 2002

