

GRRIP I Watershed Analysis for Rochester, MA.

Estimates of Land Use, Impervious Surface and Annual Nonpoint Source Pollution Loads

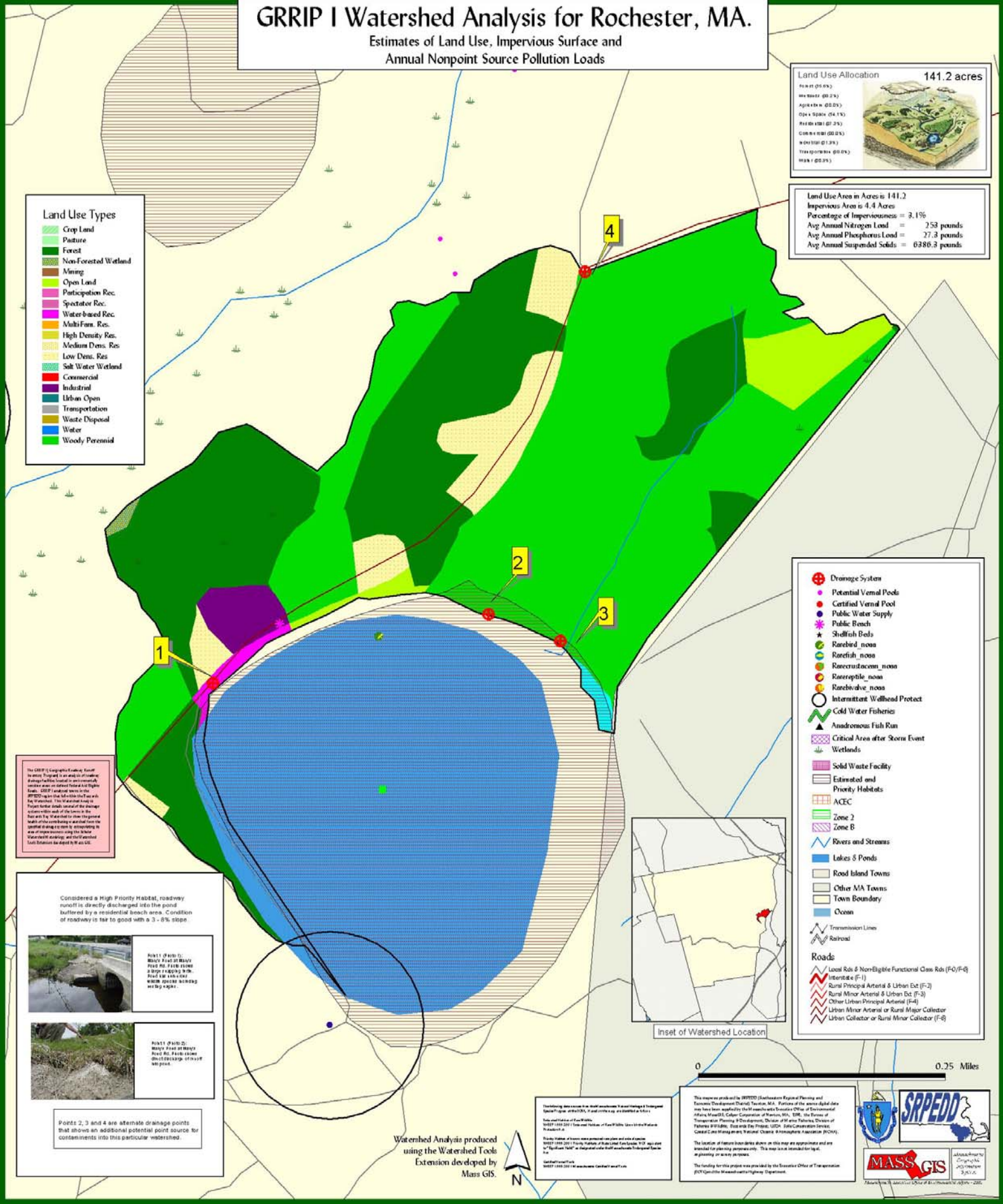
Land Use Allocation 141.2 acres

WATER	(0.0%)
WATER	(0.0%)
AGRICULTURE	(0.0%)
OPEN LAND	(0.1%)
RESTORATION	(0.2%)
CONCRETE	(0.0%)
WOODS	(1.2%)
TRANSPORTATION	(0.0%)
WATER	(0.0%)

Land Use Area in Acres is 141.2
 Impervious Area is 4.4 Acres
 Percentage of Imperviousness = 3.1%
 Avg Annual Nitrogen Load = 253 pounds
 Avg Annual Phosphorus Load = 27.3 pounds
 Avg Annual Suspended Solids = 6386.3 pounds

Land Use Types

- Crop Land
- Pasture
- Forest
- Non-Forested Wetland
- Mining
- Open Land
- Participation Rec.
- Spectator Rec.
- Water-based Rec.
- Multi-Fam. Res.
- High Density Res.
- Medium Dens. Res.
- Low Dens. Res.
- Salt Water Wetland
- Commercial
- Industrial
- Urban Open
- Transportation
- Waste Disposal
- Water
- Woody Perennial



The GRRIP I Geographic Analysis Report is being prepared in accordance with the drainage plan located in an environmentally sensitive area in Central Massachusetts. GRRIP I analysis was conducted for the Watershed in the State of Massachusetts. This analysis was conducted to provide a detailed assessment of the watershed's health and to identify potential sources of nonpoint source pollution. The analysis was conducted using the Watershed Analysis Tool (WAT) and the Watershed Analysis Extension for ArcGIS. The analysis was conducted by MassGIS.

Considered a High Priority Habitat, roadway runoff is directly discharged into the pond buffered by a residential beach area. Condition of roadway is fair to good with a 3 - 8% slope.

Point 1 (Photo 1): Runoff from 20' wide road. Road is in good condition. Runoff is directly discharged into the pond. Condition of roadway is fair to good with a 3 - 8% slope.

Point 1 (Photo 2): Runoff from 20' wide road. Road is in good condition. Runoff is directly discharged into the pond.

Points 2, 3 and 4 are alternate drainage points that show an additional potential point source for contaminants into this particular watershed.

Drainage System

- Potential Vernal Pools
- Public Water Supply
- Public Beach
- Shellfish Beds
- Rarefish_noss
- Rarefish_noss
- Rareinsect_noss
- Rarearth_noss
- Rarebivalve_noss
- Intermittent Wetland Protect
- Cold Water Fisheries
- Anadromous Fish Run
- Critical Area after Storm Event
- Wetlands
- Solid Waste Facility
- Estimated and Priority Habitats
- ACEE
- Zone 2
- Zone B
- Rivers and Streams
- Lakes & Ponds
- Road Island Towns
- Other MA Towns
- Town Boundary
- Ocean
- Transmission Lines
- Railroad

Roads

- Local Rd & Non-Eligible Functional Class Rd (F0/F4)
- Interstate (F-1)
- Rural Principal Arterial & Urban Ext (F-2)
- Rural Minor Arterial & Urban Ext (F-3)
- Other Urban Principal Arterial (F-4)
- Urban Minor Arterial or Rural Major Collector
- Urban Collector or Rural Minor Collector (F-6)



Watershed Analysis produced using the Watershed Tools Extension developed by MassGIS.

Technical data source: MassGIS, Massachusetts Geographic Information System. Data provided by the State of Massachusetts, Department of Transportation, Division of Transportation Planning & Development, Office of Environmental Affairs, MassGIS, Capital Corporation of Boston, MA, ERI, the Bureau of Transportation Planning & Development, Office of Environmental Affairs, MassGIS, Statewide Data Project, USGS, USGS Conservation Service, Central Mass Management District, Connecticut Association of Planning & Surveying.

This map was produced by SRPEDD (Southwestern Regional Planning and Economic Development District, Torrington, MA). Portions of the aerial digital data were provided by the Massachusetts Executive Office of Environmental Affairs, MassGIS, Capital Corporation of Boston, MA, ERI, the Bureau of Transportation Planning & Development, Office of Environmental Affairs, MassGIS, Statewide Data Project, USGS, USGS Conservation Service, Central Mass Management District, Connecticut Association of Planning & Surveying.

The location of features shown on this map are approximate and are intended for planning purposes only. This map is not intended for navigation or survey purposes.

The funding for this project was provided by the Executive Office of Transportation (DOT) Office of Massachusetts Highway Department.