

Town of North Attleboro, MA

GRRIP (Geographic Roadway Runoff Inventory Program)



FOXBOROUGH

MANSFIELD

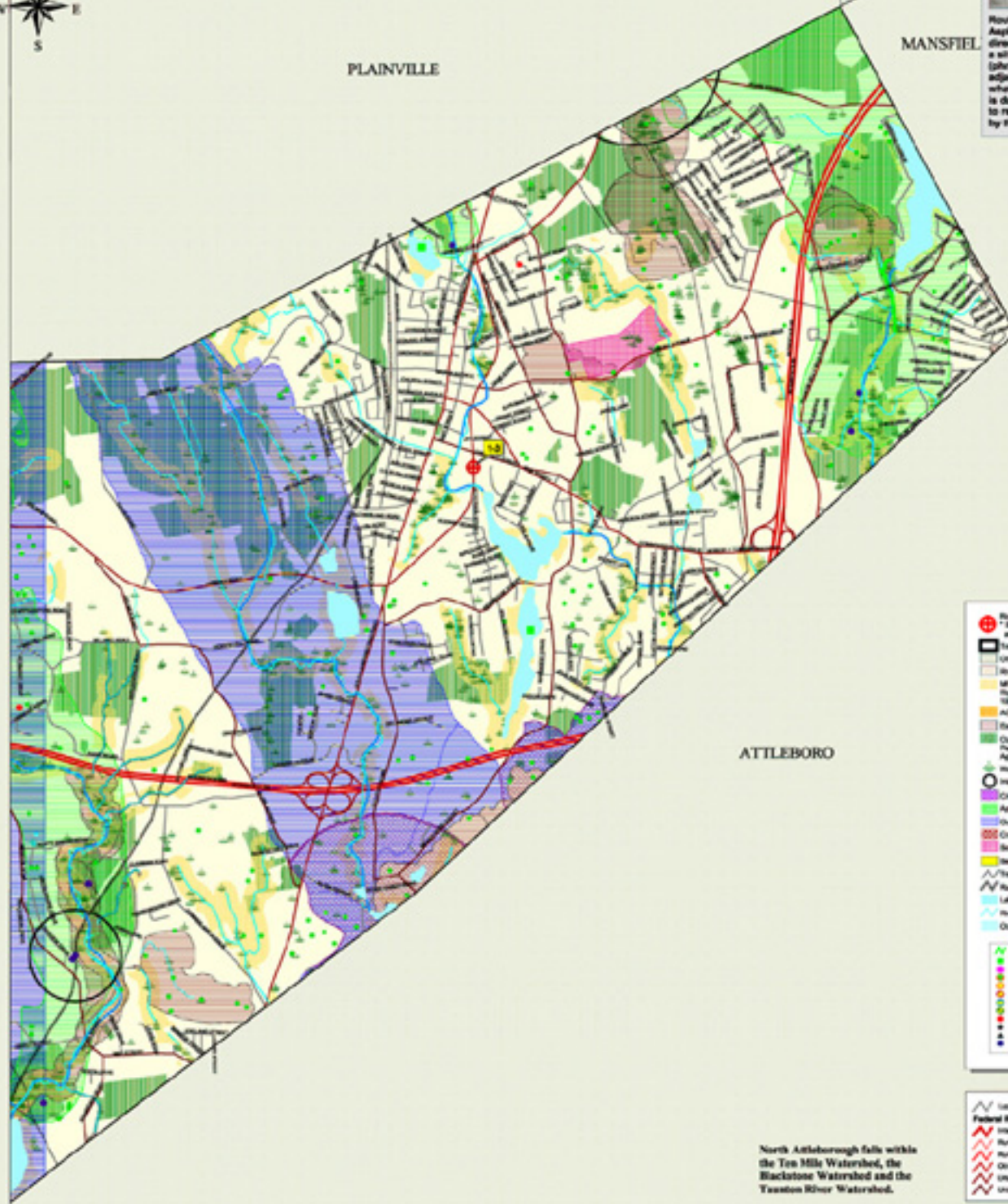
PLAINVILLE

ATTLEBORO

North Attleborough falls within
the Ten Mile Watershed, the
Blackstone Watershed and the
Taunton River Watershed.



Route 1 wetland, north, below Chestnut. Asphalt swale to 1' corrugated pipe emptying directly in the wetland. This is an example of a silted wetland overrun by vegetation (phragmites). Runoff from the road and adjacent parking lots have literally filled what was once an open waterbody. Pipe is damaged and filled with 4" of silt. Plans to restore this area have been developed by the Coe Crews.



- Road Crossing and Stream Crossing Structures including Bridges, Culverts, and Dams
 - Town Boundary
 - Other Massachusetts Towns
 - Waste Water Treatment
 - MRP Natural Land Resource Corridor
 - 100' Water Buffer
 - Adirco Phase or Critical Environmental Resource
 - Elementary & Priority Habitats (EPH)
 - Open Space (includes Municipal, Municipally Protected, Private Non-Profit, Agricultural, Chapter 91A, B)
 - Wetlands
 - Wetland Wetland Protection (10 or more)
 - Critical Areas of Storm Events (CAF)
 - Approved Zoned Protection Area (AZPA)
 - Outstanding Resource Waters
 - Cemetery Site (some Inland/Phony)
 - Solid Waste Facilities/SEP
 - Sewer Beaches
 - Transmission Lines
 - Railroads
 - Lakes & Ponds
 - Rivers & Streams
 - Ocean
- Collector Fisheries/Habitats (C/F/H)
 - Collector Fisheries/Habitats (C/F/H)
 - Public Water (P/W)
 - Rare & Sensitive Grasslands (R/S/G)
 - Rare & Sensitive Wetlands (R/S/W)
 - Rare & Sensitive Forest (R/S/F)
 - Rare & Sensitive Bird (R/S/B)
 - Certified Wetland Ponds
 - Wetland Ponds
 - Aquatic/Stream Fish/Bird
 - Public Water Supplies

- Local Rte & Other Non-Right of Way Road
- Federal Road Inventory
- Interstate (I-95)
- Rural Principal Arterial & Urban Exp (P-2)
- Rural Minor Arterial & Urban Th (P-3)
- Other Urban Principal Arterial (P-4)
- Urban Minor Arterial/Road Major Collector (P-5)
- Urban Collector or Rural Minor Collector (P-6)



The following data sources form the Geographic Roadway Runoff Inventory & Program (GRRIP) for the Town of North Attleboro, MA:

Geographic Roadway Runoff Inventory & Program (GRRIP) - provides an inventory of roadway drainage structures, basins, and stormwater treatment systems, on defined state and local roads. The computer based mapping system provides a means for assessing the condition of infrastructure, along with other data map layers. It is able to generate a town's environmental and road network information.

Copyright 2007
SRPEDD
ARS/GS

This map was produced by SRPEDD (Southeastern Regional Planning and Economic Development District) Taunton, MA. Portions of the source data may have been supplied by the Massachusetts Executive Office of Environmental Affairs, MassDOT, Colver Corporation of Boston, MA, USGS, Executive Office of Transportation and Public Works, Division of Marine Fisheries, Department of Fish & Game, Buzzards Bay Project, USGS National Resources Conservation Service, Coastal Zone Management, National Oceanic & Atmospheric Administration (NOAA), The Nature Conservancy (TNC), Natural Heritage (NHESP).

The location of feature boundaries shown on this map are approximate and are intended for planning purposes only. This map is not intended for legal engineering or survey purposes.

The funding for this project was provided by the Executive Office of Transportation (EOTM).